



PUMP PONTOON

Multi-Drum Float



Our reputation is spreading

The Williams Pump Pontoon is a multi-drum float which allows the positioning of effluent pumps and stirrers on effluent ponds and concrete tanks. Now with a quick way of removing the pump from the pontoon, is as easy as undoing 4 coach bolts and lifting the pump straight off without the problem of undoing the outlet pipe. The advantages of using a pontoon to float the effluent pump is that it will pump from a set depth, floating on the surface of the pond. The standard set-up will cater for all types of effluent pumps from 5hp to 30hp. The pontoons are attached to the edge of the pond or tank by either a boom or guide. The option of a guide or legs ensures that the stirrer does not hit the bottom of the tank.

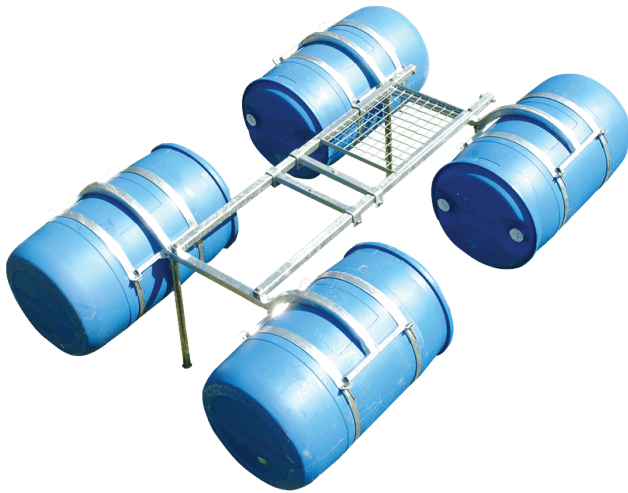
FEATURES

Multi-drum float	Caters for all types of effluent pumps from 5hp tp 30hp
Allows the positioning of effluent pumps and stirrers on effluent ponds and tanks	3 - 10 metre booms available
	Available in 4 or 6 drum configuration
A floated effluent pump will pump from a set depth	NZ Designed and Manufactured
Pontoons float on the surface of the pond	Neat and tidy, easy to use
Boom contains 76mm O.D. effluent pipe and 33mm O.D. service pipe for electrics	Built to last
	Cost effective



www.williamsirrigation.com

Pontoon Parts



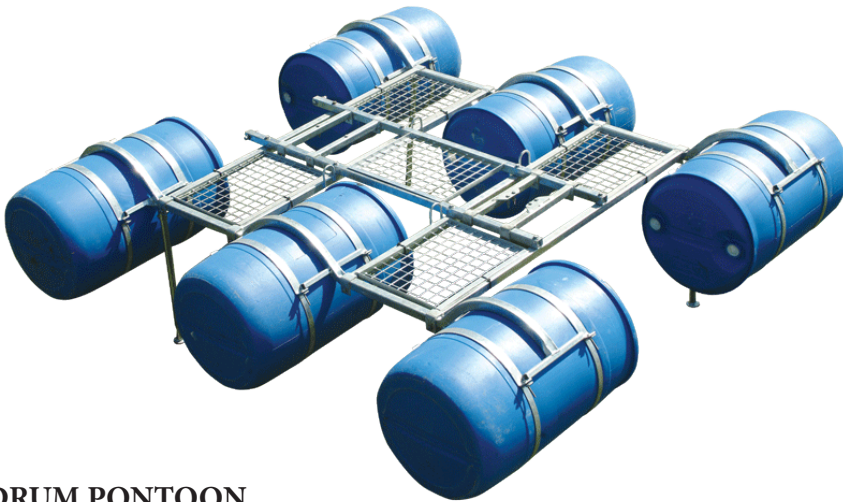
4 DRUM PONTOON

CODE

PO4DY Yardmaster

PO4DD Doda

Includes legs and pump brackets. Drums not included



6 DRUM PONTOON

CODE

PO6DY Yardmaster

PO6DD Doda

Includes legs and pump + stirrer brackets. Drums not included.



CODE

BOOM3 (3m)

BOOM3.5 (3.5m)

BOOM7 (7m)

BOOM10 (10m)

BOOM14 (14m)

All Booms include post brackets and 75mm delivery hose x 2000mm + 50/90 hosetail & clamp.

PONTOON GUIDE SYSTEM FOR SUMPS

Strengthening Rail

3-5m booms
POBHR35

7-10m booms
POBHR710

COMPLETE PONTOONS

PART

PO4DY Yardmaster

PO4DD Doda

Includes legs and pump brackets. Drums not included.

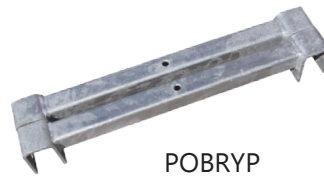
PART

PO6DY Yardmaster

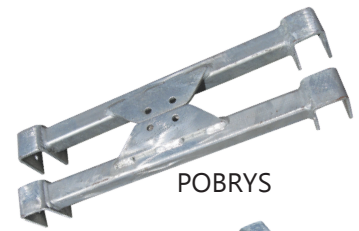
PO6DD Doda

Includes legs and pump + stirrer brackets. Drums not included.

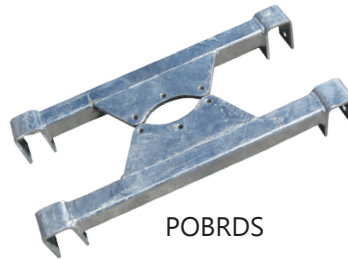
PUMP BRACKETS



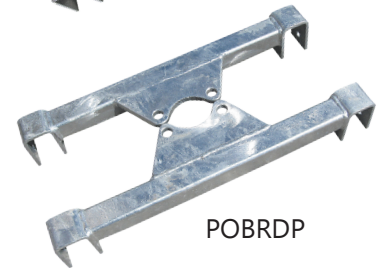
POBRYP



POBRYB



POBRDP



POBRDS

PART	CODE
Yardmaster Pump Brackets	POBRYP
Yardmaster Stirrer Brackets	POBRYB
Doda Pump Brackets	POBRDP
Doda Stirrer Brackets	POBRDS
Gillies and Numedic	

PONTOON UPSPEC KIT



POSP

PART	CODE
Safety kit for 4 drum	POPLATKIT4
Safety kit for 6 drum	POPLATKIT6
Walkway for Boom 2.4 x 300	POBOWALK
Platform for Pontoon	POSP
Safety Kit doesn't include pontoon.	



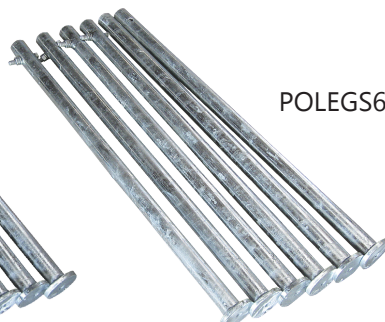
Pontoon Safety Kits can be fitted to Williams Pontoons.

All practical steps must be taken when servicing pontoons. We recommend removing the pontoon from the pond before any servicing.

LEGS



POLEGS4



POLEGS6

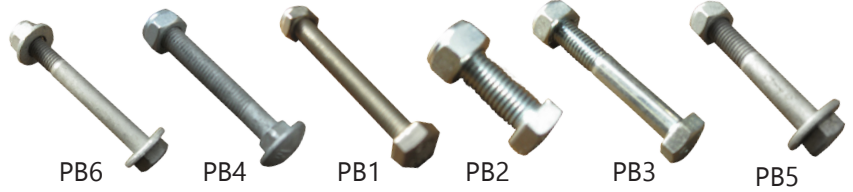
PART	CODE
Set of 4 legs	POLEGS4
Set of 6 legs	POLEGS6

DRUMS



PART	CODE
200L Plastic	DRUM

BOLTS

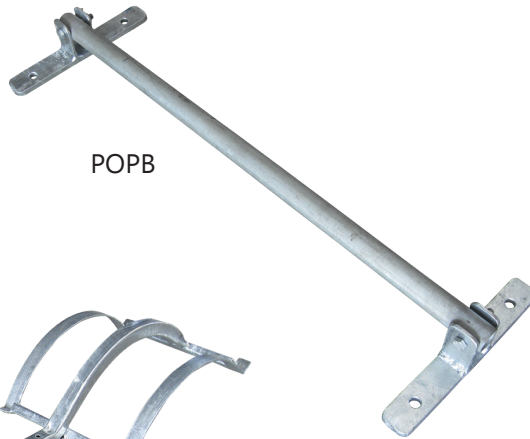


PART	CODE
M12 x 100 galv with nyloc nuts and 2 x flat washer	PB6
M10 x 75 galv coach bolts with nyloc nuts	PB4
M8 x 65 SS304 set screw bolts with nyloc nuts	PB1
M10 x 30 zinc bolts with nyloc nuts	PB2
M10 x 65 zinc bolts with nyloc nuts	PB3
M12 x 65 galv with nyloc nuts	PB5

MISC PARTS



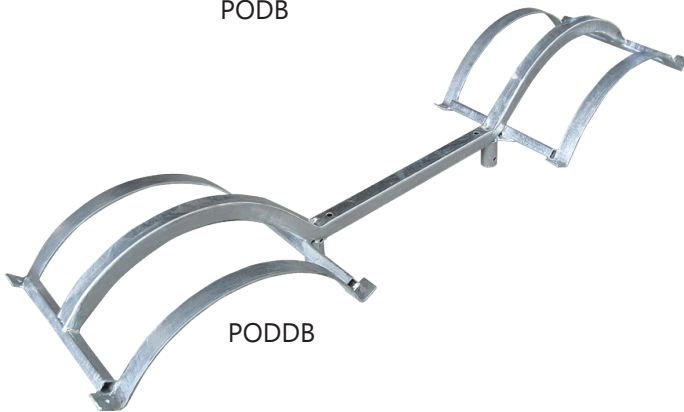
PODB



POPB



RUBBER75



PODDB



HT5090

CONVERSION KIT

PART	CODE
3-4	POCK34
4-6	POCK46

PART	CODE
Pontoon bands	PODB
Pontoon double drum brackets	PODDB
Post brackets	POPB
Rubber 75mm delivery hose	RUBBER75
Hosetail	HT5090